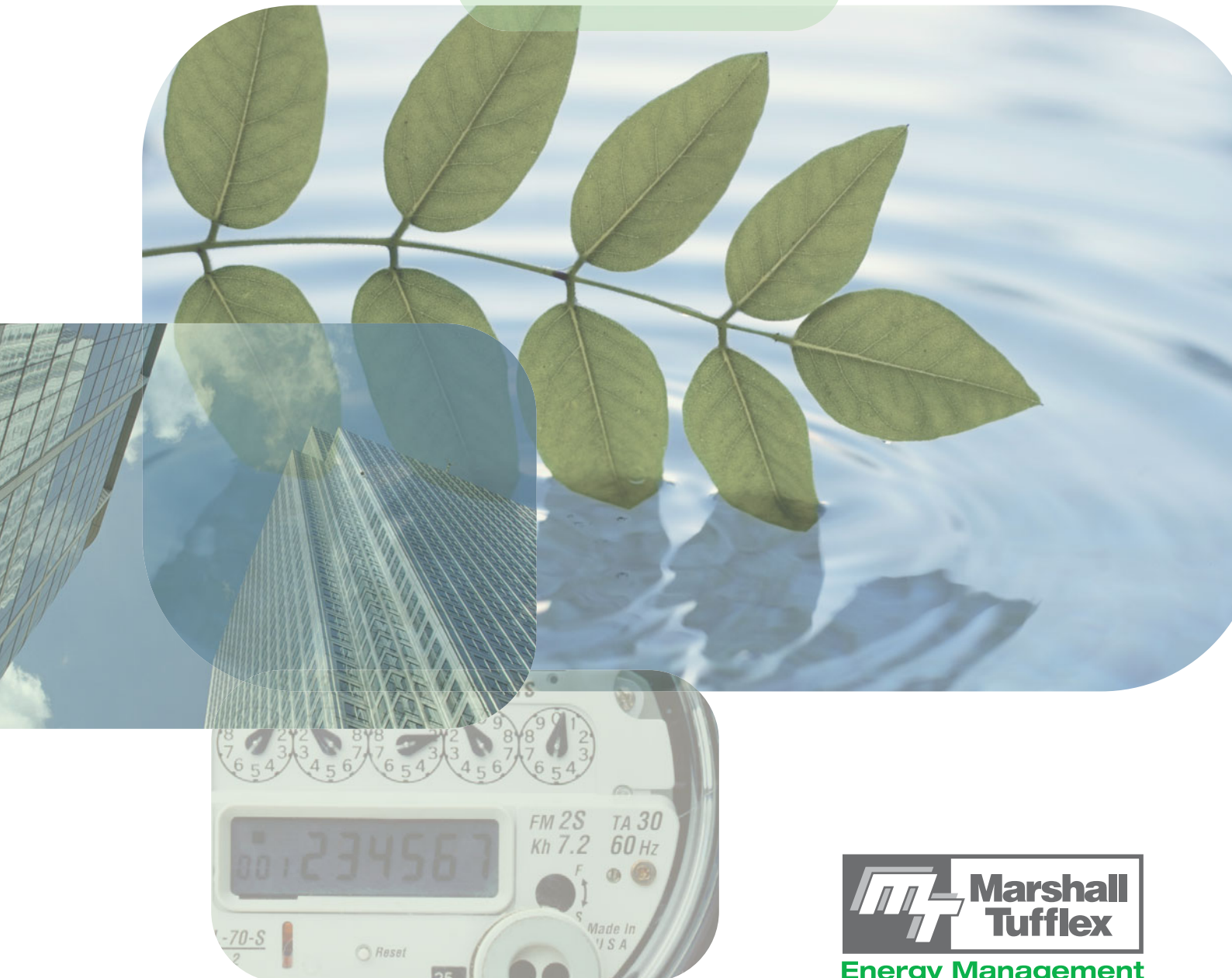


# IPSIS

The **smartest** way to manage energy



 **Marshall  
Tufflex**  
Energy Management

# Energy reduction solutions for offices and education

Marshall Tufflex Energy Management is changing the way energy is managed in the workplace and education by automating energy savings through an integrated system that eliminates electrical waste and raises energy awareness. This new holistic solution, *Ipsis powered by SenseLogix*, monitors, controls, reduces and reports on electrical consumption down to socket and user level. This enables electrical equipment and Information Communication Technology (ICT) to be individually managed by the same integrated energy management system for the first time.

Rising energy consumption is affecting businesses, organisations and education alike, increasing demands on building services and the electrical infrastructure. Electricity consumption in the service sector has doubled since 1990 with ICT accounting for nearly 20% of the total electricity bill. Both these figures are set to double again by 2020.

Combine the rising power demands with new energy legislation such as the CRC Energy Efficiency Scheme, the changes in the Building Regulations Part L2 2010, and increasing energy costs, there is now a genuine need to reduce consumption and lower carbon emissions.

Ipsis is an energy reduction system designed to measure, monitor and control (reduce) energy consumption of equipment in both existing and new buildings, eliminating the need for costly rework and major disruption. Ipsis delivers a single solution that can manage both the electrical items and ICT.

# Refurbishment and New Build

Ipsis is pre-integrated into a range of cable management products which includes floor boxes, perimeter wall trunking, power poles and desk top modules. This holistic range allows specifiers, developers, contractors and building owners to integrate an energy reduction system into the infrastructure of the building from the outset, effectively removing installation costs; making zero carbon easier to achieve for everyone.



## A Solution for Existing Buildings

Ipsis offers a solution to manage the energy consumption in existing buildings without the expensive additional cabling required for the majority of Building Energy Management Systems (BEMS). It does this by retrofitting into the existing cable management infrastructure and utilising the existing cabling networks.

Cable management products such as floorboxes and perimeter wall trunking are used to retrofit 'Energy Nodes' which, as part of an integrated system, manage equipment such as vending; water heaters, coolers and dispensers; air con and stand alone heaters; and ICT

including PCs, printers, photocopiers, monitors, docking stations etc to reduce electrical energy by up to 70%.

Ipsis combines an integrated hardware and software solution to offer unparalleled control and reporting capability consisting of;

- A 'micro' aM&T solution
- A range of metering and control devices
- PC power management solution
- An energy dashboard
- A suite of energy reporting tools

## Customer Benefits

Ipsis provides a host of benefits to building owners, energy users and building services providers aimed at reducing energy consumption and lowering carbon emissions;

- Lower energy consumption - eliminate electrical waste
- Cut carbon emissions
- Reduce equipment On-time
  - Improved equipment life expectancy
  - Lower building cooling costs
- Increase energy awareness amongst employees, students and customers
- Support Corporate Social Responsibility (CSR) and carbon management plans
- Provide remote management of buildings and energy use
- Management of ICT as part of an integrated energy management system
- Aid compliance for building regulations and energy legislation

# Creating Energy Awareness

Ipsis is an IP-enabled system with a user friendly energy dashboard. The dashboard can be fully customised and configured to meet your exact requirements, making it ideal for use in receptions and lobbies.

The system measures energy use down to socket level, giving each individual user and piece of equipment its own energy profile, all of which is visible through the dashboard. This information can be accessible to all organisational stakeholders to promote energy awareness.



The dashboard is also used to manage the system and being web based there is no complicated programming, making it easy to administer. This also provides energy and facility managers the ability to manage the system remotely, making it an ideal solution for multiple site organisations such as nationwide businesses, local authorities, PFI and Universities.

## Integrating ICT Energy Management

Ipsis is the first system designed to manage operational energy from ICT equipment such as PCs, monitors, printers, photocopiers, docking stations etc together with electrical equipment in the building. Ipsis allows exact identification of energy usage, enabling management of energy saving policies to deliver excellent energy saving capabilities.

It is important not to impact the PC user when managing PCs, therefore, Ipsis incorporates a number of secure operations to ensure PCs are never turned off when in use and perform 'safe' PC shutdowns to ensure data is not lost.

## Energy Reporting Tools

Ipsis provides a suite of reporting tools to enable a host of additional benefits. The reports are fully customisable and show high level energy data, which can be imported from existing systems if required, and the operational energy use collated by the Ipsis system.

This modular format means building owners can gain unparalleled information by building level e.g. site, campus, block, floor, room or by equipment type e.g. ICT, vending, heating, cooling. Energy apportionment reports can also be produced to support departmental and cost centre budgeting and project costing, helping delegate responsibility for energy use to departmental managers as part of a carbon management plan.

Ipsis reporting capabilities include:

- Real time organisational and managed equipment reports
- aM&T and AMR meter data collection
- All reports configurable in multiple reporting parameters £, kWh, CO<sub>2</sub>
- Energy apportionment by department, cost centre and project
- Energy use by equipment type e.g. PCs, monitor, vending



# Marshall-Tufflex Energy Management



Marshall-Tufflex have extensive experience in the electrical industry and are market leaders in the supply of PVC-U, steel and aluminium cable management products for commercial, healthcare and education markets.

As a British-based company that has traded since 1942, our priority is to re-invest for the future and to constantly pioneer new and effective solutions. We pride ourselves in offering excellent customer service and comprehensive technical support.

## Quality Assurance

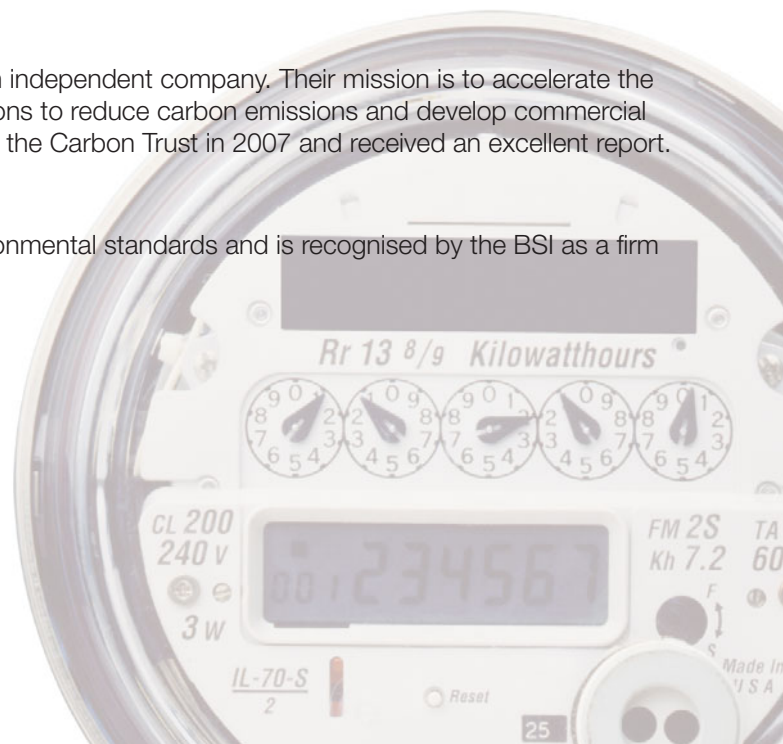
Dedicated to achieving high service levels, our products meet the highest technical standards and the company is recognised by the BSI as a firm of Assessed Capability to BS EN ISO 9001:2008.

## Carbon Assessment

The Carbon Trust was set up by Government in 2001 as an independent company. Their mission is to accelerate the move to a low carbon economy by working with organisations to reduce carbon emissions and develop commercial low carbon technologies. Marshall-Tufflex was assessed by the Carbon Trust in 2007 and received an excellent report.

## Environmental Standards

Marshall-Tufflex is totally committed to achieving high environmental standards and is recognised by the BSI as a firm of Assessed Capability to BS EN ISO 14001:2004.



# IPSIS



**Marshall Tufflex Energy Management Ltd**  
Churchfields Industrial Estate Hastings  
East Sussex TN38 9PU  
T 01424 856610  
F 01424 856640  
E [info@marshalltufflexenergy.com](mailto:info@marshalltufflexenergy.com)  
[www.marshalltufflexenergy.com](http://www.marshalltufflexenergy.com)



In pursuance of our policy of continued product improvement Marshall Tufflex Energy Management reserve the right to change the design or specification of its products without notification.

10022

